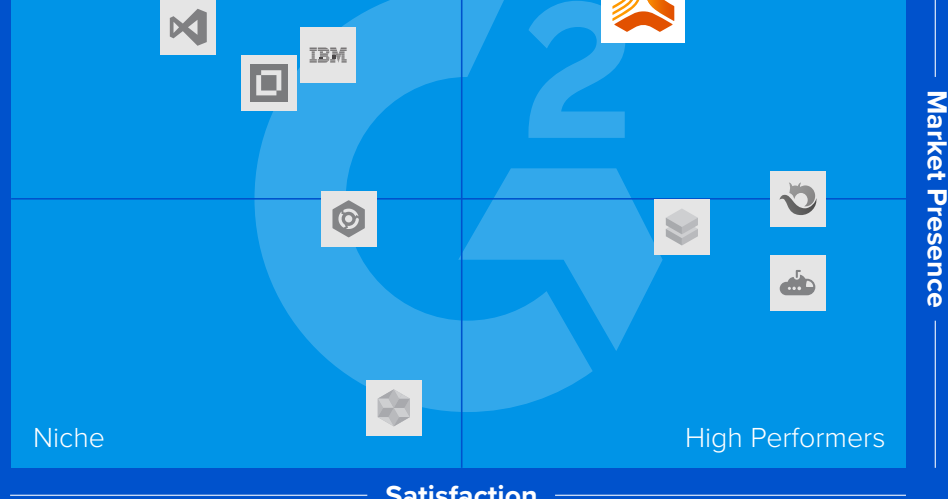


G2 Recognizes Jama Connect® as the only Leader in Requirements Management

[SCHEDULE A DEMO](#)



Grid® Report for Requirements Management | Fall 2021



Grid® Report for Requirements Management | Fall 2021 is based off of scores calculated using the G2 Grid® algorithms from reviews collected by August 17, 2021.

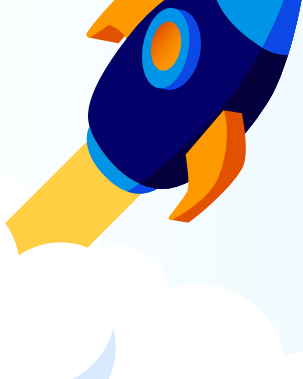
“

Simple to use. All engineers were able to pick up and use the tools with very little learning curve. **To everyone of the team, this tool was a breath of fresh air.**

— G2 reviewer ★★★★★



**Achieve ROI
45% faster**
than IBM® DOORS Next®



**Go live with
Jama Connect®
2.7x faster**
than IBM® DOORS Next®

“

JAMA Connect allows my team and I the ability to collaborate in our product design and development. It has a nice user interface that is intuitive and quick for new employees to learn. I also like the API which allows us to sync it with our existing project management tools.

— G2 reviewer ★★★★★



“

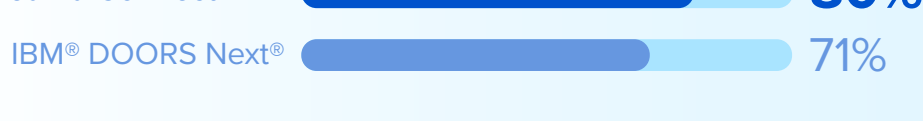
Upsides:

- **Very easy to use** with minimal training
- The entire system is **very web 2.0/UX friendly**
- **Excellent traceability** and view management
- Administration of the system is **very easy and intuitive**

— G2 reviewer ★★★★★



Ease of Admin



Ease of Doing Business



“

Jama Connect has a modern intuitive interface. Most employees and contractors have no trouble spooling up in order to use it. More importantly, the back end of Jama Connect is well thought out and easily configurable for a wide range of user needs. Jama is flexible to be used in many ways by many groups for many types of workflows.

— G2 reviewer ★★★★★



“

Ease of use and low barrier to entry. Once configured, the tool is usable within a few hours for all staff, even without Systems Engineering experience. Most importantly, it doesn't slow down or get in the way of the engineering.

— G2 reviewer ★★★★★



Grid Score Breakdown

	Satisfaction Score	G2 Score
Jama Connect®	72	81
IBM® DOORS Next®	34	57

[SCHEDULE A DEMO](#)