



Build great products.

Contour 3.1 Enterprise Architect Guide

© 2011 Jama Software, Inc.

Table of Contents

Part I Welcome to Contour	3
Part II Enterprise Architect Connector 3.1	3
1 EA Connector Install.....	4
2 Getting Started.....	5
3 Define Mapping Scheme.....	6
4 Import.....	8
5 Synchronize with Contour.....	9
6 Properties.....	10
7 EA FAQ.....	10
8 EA Troubleshooting.....	14

1 Welcome to Contour

CONTOUR 3

Enterprise Architect Connector 3.1 Setup Guide

OVERVIEW

Welcome to Contour.

Jama Contour is designed to provide you and your entire team a centralized, light-weight application for managing requirements. This installation guide is written to help you get the EA Connector installed in either an evaluation or production environments.

Installation is relatively straightforward, but we are happy to remotely install and configure Contour for you if you'd prefer. If you run into trouble, give us a call (Technical Support) at 1-800-679-3058 or support@jamasoftware.com Thanks for choosing Contour. Enjoy the freedom of collaborative requirements management.

503.922.1058 | success@jamasoftware.com | www.jamasoftware.com

2 Enterprise Architect Connector 3.1

Overview

The Jama Contour EA Connector is an Add-In for Enterprise Architect that allows Enterprise Architect users to import items from Contour and utilize those items to model systems in Enterprise Architect. Once imported into EA the items can be synchronized bi-directionally. Below are the key features available with the Enterprise Architect Connector 3.1.

- Import Items from Contour into EA based on Contour Item Types (i.e Requirements)
- Import relationships defined in Contour
- Synchronize changes made in both Contour and EA

Note: Enterprise Architect 8 and 9 is officially supported, if you have another version of Enterprise Architect, please contact support@jamasoftware.com. Check to see if you're using the correct [versions](#) of Contour, Enterprise Architect, and the Enterprise Architect Connector.

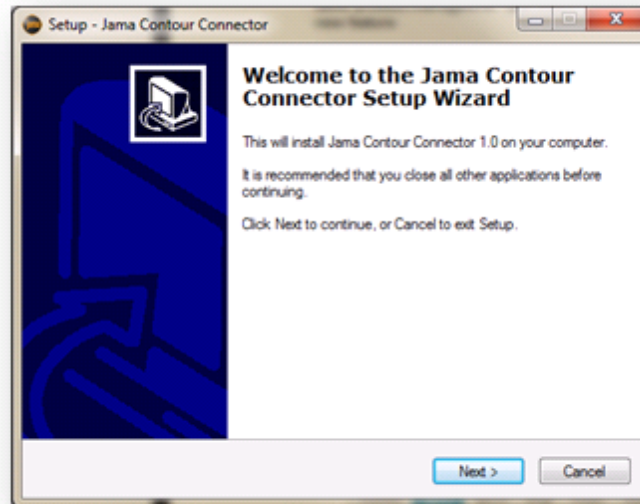
2.1 EA Connector Install

Follow these steps to install the Jama Contour EA Connector.

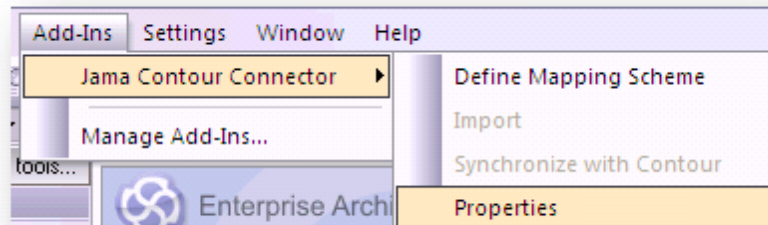
1. Ensure that Enterprise Architect is installed on your system
2. Run the EA_ContourConnector_(version_no).exe setup file and follow the installer steps until installation is complete.

Note: Please contact [Sales](#) to obtain the exe file needed to install the EA Connector.

Note: If Enterprise Architect is already opened while installing, it will need to be restarted.



3. Start Enterprise Architect.
4. Verify that the Jama Contour Connector menu appears under the Add-Ins of the Enterprise Architect top-level menu.



Note: If the Jama Contour Connector menu doesn't appear in your Add-Ins menu, you may need to register your Contour Connector Add-In manually. To do this, take the following steps:

1. Open a Command Prompt.

2. Navigate to the directory of your .NET 2.0 Framework (e.g. C:\Windows\Microsoft.NET\Framework\v2.0.50727\) and ensure that the utility RegAsm.exe is included in this directory.
3. Run RegAsm /codebase "{Your EA Installation Directory}\CS_EA_ContourConnector.dll" (e.g. RegAsm /codebase "C:\Program Files\Sparx Systems\EA\CS-EA_ContourConnector.dll")
4. Restart Enterprise Architect.

2.2 Getting Started

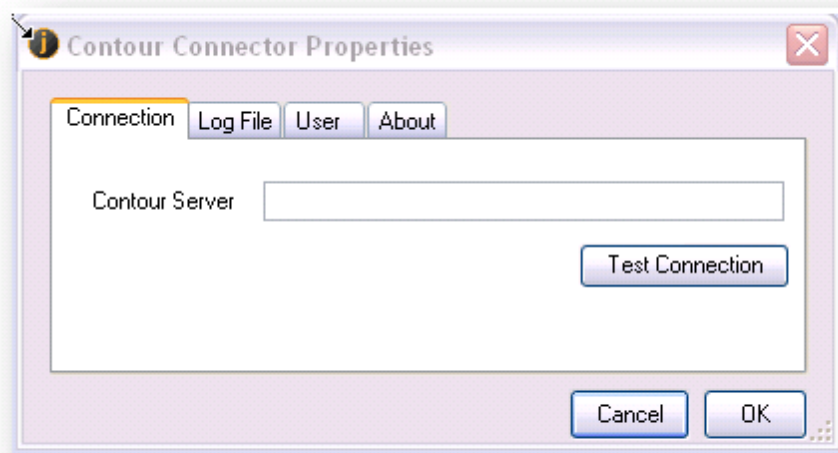
Once the Add-In has been installed. There will be 4 menu options available via the Add-In menu.

1. Define Mapping Scheme
2. Import
3. Synchronize with Contour
4. Properties

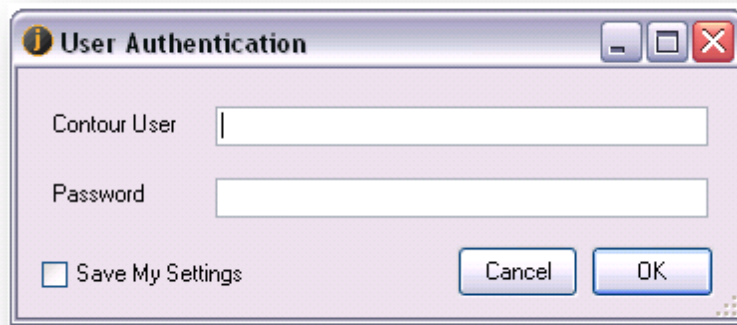
Connecting to Contour & Authentication

The first time you attempt to utilize any of the above menu options the Add-In will check if a connection has been defined and will prompt the user for credentials. Open the Properties menu option to define connection information from EA to Contour.

- **Defining a Connection** - The Add-In needs to know the location of Contour. Typically this is something like "http://domain/contour"



- **Authenticating** - Once the connection is defined and is successful the Add-In will prompt for user credentials. The Add-In will use the permissions defined in Contour to determine available functionality within EA. Be sure to check "Save My Settings".



Functionality in EA based on Contour permissions.

Contour Permissions	EA Connector Functionality
Organization Admin	<ul style="list-style-type: none"> • Define Mappings • Import • Synchronize (Bi-directionally)
Manage Project	<ul style="list-style-type: none"> • Import • Synchronize (Bi-directionally)
Write	<ul style="list-style-type: none"> • Import • Synchronize (Bi-directionally)
Read	<ul style="list-style-type: none"> • Import • Synchronize (From Contour Only)

2.3 Define Mapping Scheme

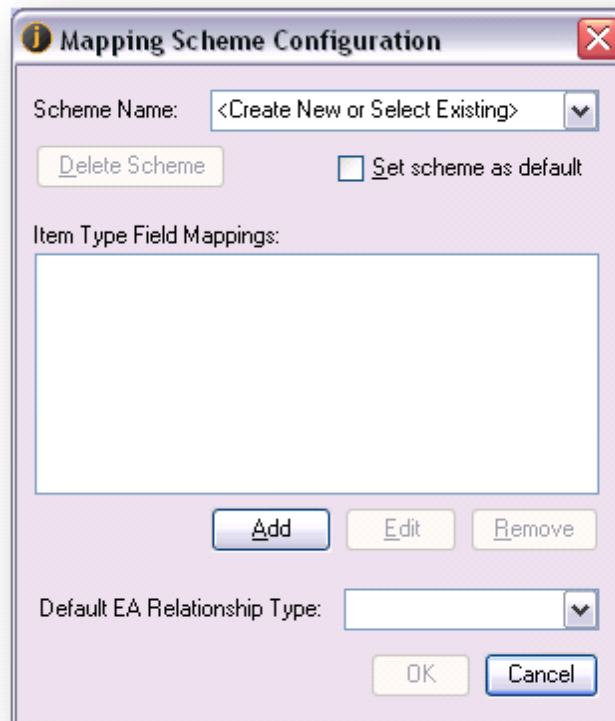
The Mapping Scheme maps the Item Types in Contour with the Types in EA along with the specific field mappings. It is possible to create a Scheme that includes multiple mappings so users can select a single Mapping Scheme to conduct an Import that could consist of multiple Item Types.

Schema Configuration

The Mapping Scheme Configuration dialog requests the following information:

- **Schema Name** - The name of the Schema.
- **Item Type Field Mappings** - A list of defined field mappings.
- **Default EA Relationship Type** - The Add-In will attempt to map the Contour relationship type with an existing EA relationship type. If a match is not found this provides a default which will be used instead.


- **Set scheme as default** - This option will set the selected scheme as the default for all users.



Add Field Mappings

The Contour Field Mapping dialog first asks for a Contour Item Type to be selected. Once selected, Field Mapping information will be requested. The dialog requests the following information.

- **Item Type** - This is the specific Item Type from Contour which will map to a Requirement type in EA.
- **Optional Criteria** - This is a filter which will only import matching items from Contour. This is the same criteria as defined in the Search section of the main help.
- **Field Mappings** - This section provides the ability to map Contour Fields (As defined by the Item Type) with the EA Requirement Type. (Please see the FAQ for tips on the field mapping.



The image shows a dialog box titled "Contour Field Mapping". At the top, there is an "Item Type:" dropdown menu set to "Requirement". Below it is an "Optional Criteria:" text field. The main section is titled "Field Mappings" and contains a table with two columns: "Contour Field" and "Enterprise Architect Field". The table lists various fields with corresponding dropdown menus for mapping. At the bottom of the dialog are "Cancel" and "Save Map" buttons.

Contour Field	Enterprise Architect Field
Name	Name
ID	
Description	
Status	
Priority	
Implementation Risk	
Effort	
Assigned	
Release	
Rationale	
Source	

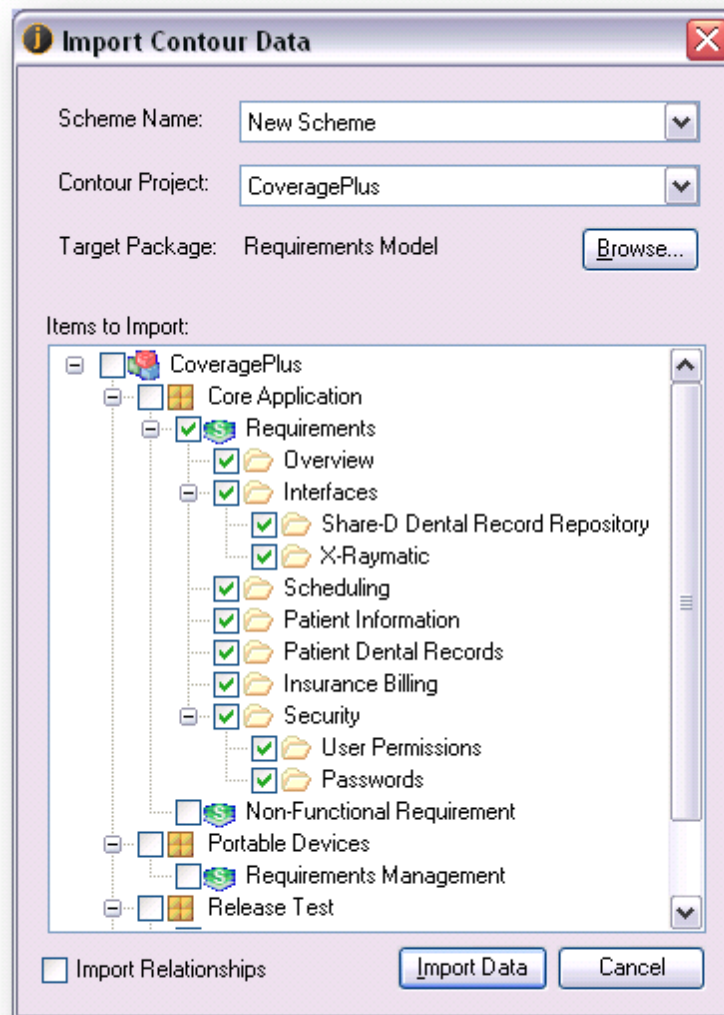
2.4 Import

Once the field mappings between Contour and EA are configured, the user is ready to perform the first import. Many organizations where multiple users are sharing the same EA Project will have their users synchronize the data from this initial import. All items based on the Scheme Mapping and Import settings will be imported including the folder structure.

Note: You must have a new project opened to be able to import items.

1. From Enterprise Architect menu select Add-Ins -> Jama Contour Connector -> Import.
2. A list of Scheme Mappings will be available (If a default was specified it will be automatically selected).
3. Based on the Scheme Mapping that is selected and the user's permissions in Contour, a list of available projects will become visible.

- Once a project is selected, a tree is displayed listing available locations in the selected Contour Project to import from based on the Scheme Mapping Item Types defined.
- Select the target package from the EA Project Browser. All imported Contour Items will be placed into this package.
- Click on the Import Data button to start the import.

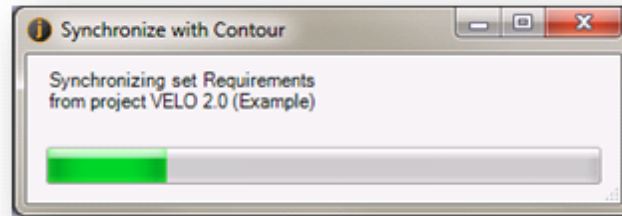


2.5 Synchronize with Contour

Once the Contour data has been imported to EA, all users within EA can synchronize the data at any time.

- From Enterprise Architect menu select Add-Ins -> Jama Contour Connector -> Synchronize with Contour.
- Alternatively, the user may choose a package in the EA Project Browser and select

Synchronize with Contour from the right-click context menu. This will ensure that the user only syncs the data that was imported into the selected package.



3. Once the synchronize progress dialog has closed, the synchronization is complete.
4. Because updates can be made in both systems, if there is a conflict the Add-In will prompt the user to decide what action to take to resolve the conflict.

Opening a Package or Element in Contour

All imported folders and items (or packages and elements in EA) can be opened in Contour through the Contour Connector add-in.

1. Select the EA element or package.
2. From the right-click context-menu, select the option Open in Contour.

2.6 Properties

The Properties menu option provides the following functionality.

- **Connection** - This is the server connection being used to Import and synchronize items in Contour. The URL should match the URL used to access Contour within a browser.
- **Log File** - Information is logged to a file located on the users machine. The destination is defined here and defaults to the users local directory. (i.e. C:\Documents and Settings\UserName\My Documents\ContourConnector\)
- **User** - The user has the option to save their login information. If they need to clear this data they can do that from here.
- **About** - This provides basic information regarding this Add-In along with support links. The Contour EA Connector version information is listed here.

2.7 EA FAQ

Here are some of our most frequently asked support questions:

- ☐ **The Contour EA Connector and 3rd party application support**

Q: The Contour EA Connector is able to connect successfully but I'm having trouble importing or synchronizing after using SVN with EA.

A: The Contour EA Connector was designed and intended for use with the EA core product. When configuring EA to utilize 3rd party integrations such as SVN or utilizing EA with an external database, the Connector may not work as intended. If you have specific questions or concerns about using 3rd party integrations with EA and the Contour EA Connector, please contact support@jamasoftware.com. For other situations, please refer to the rest of the EA Connector guide.

❑ **The Jama Contour Connector is not showing up under the Add-Ins menu.**

Q: When I go to the Add-In Manager, it says "Error-Missing" next to the Contour Connector Add-In. What is going wrong?

A: The installer did not successfully register your add-in with EA. Please see the section "Setting up your connection to Contour" above for instructions on manually registering your add-in.

❑ **Why won't my Contour Connector connect to my Contour Server?**

Q: Why won't my Contour Connector connect to my Contour Server? I am entering all of my setup information correctly.

A: There are several versions of the Contour EA Connector which are only compatible with specific versions of Contour. Be sure to verify with Jama Support if you're using the correct versions of Contour, EA, and the Contour EA Connector. There could also be a redirect setup by your administrator. If the URL provided in the EA Connector is the same URL used to log into Contour directly and does not work, check with your Administrator to determine the true URL.

❑ **I am a read-only user in Contour. Can I connect and import from Contour using the Contour EA Connector?**

Q: I only have read-only access user in Contour. Can I connect and import from Contour using the Contour EA Connector?

A: Yes. Whether your permissions within Contour are set to read-only for the targeted Sets or you're assigned a Collaborator license, you will be able to import data from Contour. You must have write permissions to the targeted package within EA.

❑ **Can I set up multiple field mapping configurations for the same set?**

Q: Our requirements are organized differently in Contour and EA and I need some fields from one Set in multiple places, is this possible?

A: Yes. The Contour EA Connector is set up for maximum flexibility. For example, you could set up one configuration for test cases with a passing status and one configuration for test cases with a failing status and map the fields differently for each configuration.

❑ Why isn't my imported data up-to-date with my latest changes in Contour?

Q: I'm looking at the Items in both systems and they are different.

A: In order to be up-to-date with the latest changes in Contour, the user must run "Synchronize with Contour" as explained in the "Synchronizing your Data" section above.

❑ Can I import multiple times into the same EA Project?

Q: Can I do multiple imports of Contour Items into the same EA project?

A: Yes, you can perform as many imports as you would like. As long as you import to an EA package that has not been the target of an import in the past, then the Contour EA Connector will treat this as a separate import. If you choose to import into an EA package that has already been the target of an import, then the Contour EA Connector treats this as a modification of a previous import. When a user synchronizes, the Contour EA Connector synchronizes on every import that exists in the EA Project.

❑ Can I change my Import?

Q: What if I want to change the Sets that I included in my import? Can I remove a Set or Project from my synchronization?

A: As described in the previous question, if you perform an import into an EA package that has already been the target of an import, then the Contour Connector treats this as a modification of a previous import. The user may then decide to remove or add several mapped sets from their import configuration.

❑ Can I synchronize from the data that a different user has imported into EA?

Q: If someone has performed the import can I synchronize it?

A: Yes, in fact this is the recommended usage for the Contour EA Connector. Once an EA administrator has performed the initial field mapping configuration and import, then all other users will just be able to synchronize from that imported data.

❑ Can I import or sync my changes in EA back over to Contour?

Q: I made changes in EA, can I have them imported into Contour?

A: At this time, initial item creation with Contour is one-way from Contour to EA. Changes in EA cannot be written back to Contour using the Contour EA Connector. **Note:** Items imported from Contour into EA can be synchronized bidirectionally.

❑ Can I import relationships or attachments into EA from Contour?

Q: Can I import or sync the relationships associated with my Contour items over to EA? How about attachments on Contour Items?

A: Relationships are a one-way synchronization from Contour to EA. Only relationships between

items that are both imported to EA will import/synchronize. If a user modifies the relationship in any way in EA, these changes will be overridden based on the state of the relationship in Contour during the next synchronization. Users can add additional relationships from an imported item to other non-imported EA items without the synchronization removing the relationship. At this time, attachments are not imported with Contour data.

❑ **Why aren't my Contour statuses showing up in EA?**

Q: I mapped my Contour status field to my EA status field. Why aren't my Contour statuses showing up in EA?

A: Many fields in Contour that are pick list or multi-select fields have different values than the values associated with the EA fields. For example, a Contour status may include values of New, Draft, and Completed while an EA element status may include values of Proposed, Approved, and Implemented. When configuring your field mappings, the Contour EA Connector does not validate that the field values in EA and Contour match.

If you wish to map fields with non-matching values, be sure to set up your Contour field values to directly reflect the values in EA (i.e. Change your Contour status values to be Proposed, Approved, Implemented, etc.).

❑ **What happens if I modify my field mapping configuration for a set after I have already imported that set into EA?**

Q: What happens if I modify my field mapping configuration for a set after I have already imported that set into EA?

A: If you modify your field mapping configuration, the new field mapping configuration will simply take effect on the next sync.

❑ **Why are all these markup tags or HTML tags in my EA Notes field?**

Q: Why are all these markup tags or HTML tags in my EA Notes field? Isn't my EA Notes field rich text?

A: The rich text editor in Contour and the rich text editor in EA both support different tags. EA does not support HTML tags like BR, P, IMG and TABLE. Therefore, all tags that are used in Contour's rich text fields will show up as tags in EA's rich text notes field if they are not supported.

❑ **Why does EA prompt me for a conflict when I have not changed the item in EA?**

Q: Why does EA prompt me for a conflict when I have not changed the item in EA?

A: When an item is opened in EA and the "OK" button is clicked, this registers as a change which is being used by the Connector to identify an potential conflict.

❑ **What version of the EA Connector should I use?**

Q: What version of the EA Connector should I use?

A: If going from a previous version of Contour (such as 2.9.x) to 3.0.x, EA will need to establish brand new imports because of the hierarchy changes in Contour. First, the old EA connector must be uninstalled. When finished, remove the original package. After installing the new connector (see below), a new sync package will need to be imported into.

The EA connector version compatibility is listed here:

Version of Contour	Version of EA Connector	Version of EA
2.9.5 - 2.9.6	EA Connector version 1	7.5 and 8.0
2.9.7 - 2.9.9	EA Connector version 2	8.0
3.0.0	EA Connector version 3	8.0
3.0.1 - 3.0.4	EA Connector version 3.0.2	8.0
3.0.1 - 3.1+	EA Connector version 3.1.0	8.0
3.0.1 - 3.1+	EA Connector version 3.1.4	8 and 9

2.8 EA Troubleshooting

Having a problem with your Jama Contour EA Connector and your problem is not addressed in the FAQ?

1. For any error messages in Enterprise Architect, please grab a screenshot by hitting Alt-PrtScn on your keyboard and send it Jama.
2. Check the EA log file located on the same machine as EA. The destination of the EA log file is specified in the "properties" of the Add-In menu option.
3. Check your Contour Log File. If you are an administrator that has access to your Contour server, check the log files in the <TOMCAT_HOME>/logs/contour for error messages that may have resulted from the Contour Connector.
4. Be sure to list the version information for Contour, EA, and your EA Connector.

Contact support at support@jamasoftware.com